

# Travelling to Eddington



# Explore

## How to get here

Eddington is located between Madingley Road, Huntingdon Road and the M11 and is just 2 miles from central Cambridge. As Eddington is new, the best map to use for planning journeys is Open Street Map: [www.openstreetmap.org/node/5073034382](http://www.openstreetmap.org/node/5073034382)

## By Bike

Eddington is a 15-minute cycle from the centre of Cambridge and has plenty of cycle parking. The Ridgeway is a cycle and pedestrian path running through Eddington connecting to Storey's Way and Huntingdon Road and is supported by an extensive network of cycle and pedestrian routes. The signed cycle networks on and off-road are shown in the map below. You can plan your cycle route on Cycle Streets, choosing the quietest or quickest route to suit you, enter CB3 1SE as your destination: [www.cyclestreets.net](http://www.cyclestreets.net)

## By Public Transport

### From Central Cambridge:

Drummer Street is the main bus station in the city centre (approximately a 25-minute walk from Cambridge Rail Station). From here, you can take the Citi 5 or 6 buses to Huntingdon Road (alight at Thornton Road) or the X3 or Citi 4 buses to Madingley Road (alight at the British Antarctic Survey). You can also take the Madingley Road Park and Ride bus from the city centre (there is a stop outside the Grand Arcade shopping centre) to the Madingley Road Park and Ride site, a 5-minute walk from Eddington. Citi 4, 5, 6 by [www.stagecoachbus.com](http://www.stagecoachbus.com), X3 by [www.go-whippet.co.uk](http://www.go-whippet.co.uk)

### From Cambridge Rail Station:

The Universal bus links Cambridge Rail Station (stop 8) to Eddington where it stops opposite Sainsbury's and (Stop1) to Cambridge Biomedical Campus. Tickets for single journeys or Whippet Day Rovers can be purchased on the bus, you can pay by cash, card or via the 'Whippet app' app available on Google and Apple App stores. Fares and timetables can be found here: <https://www.whippetbus.co.uk/universal/>

### From Cambridge North Rail Station:

If you are coming to Eddington from Cambridge North, take the Citi 2 bus to the city centre and change at Drummer Street bus station. See the information above for bus services from Drummer Street. [www.stagecoachbus.com](http://www.stagecoachbus.com)

## By Car

### From the North/West:

The A1 and M11 link to the A14 dual carriageway. Exit off the A14 at junction 31 onto the A1307 (Huntingdon Road). Once you've passed the BP garage, continue around 150 metres and turn right onto Eddington Avenue.

### From the South/London:

Leave the M11 at Junction 13, using the right-hand lane taking you East on Madingley Road towards the city centre. Continue straight past Madingley Road Park and Ride and take the next left onto Eddington Avenue.

### From the East:

Approach Cambridge on the A14 taking the B1049 (Histon Road) exit to Cambridge at junction 32. At the end of Histon Road turn right onto Huntingdon Road, after around 1-mile turn left onto Eddington Avenue.

### Parking:

We encourage visitors to avoid travelling by car to Eddington where possible as there is limited parking on site. Parking charges apply 8am-6pm Monday to Friday (including public holidays) and 10am-5pm Saturday to Sunday (including public holidays). Drivers can pay using cashless on-street machines or via the Just Park App. The majority of spaces have a maximum stay of 2 hours and no return within 1 hour. Blue Badge holders can park for free without using the machines or Just Park App in marked disabled bays only and when displaying a parking clock. Maximum stay limits apply. Download the App via Google or Apple stores in advance or visit [www.justpark.com](http://www.justpark.com)



Eddington is a new community in Cambridge for you to explore. Located just two miles from Cambridge city centre, Eddington is a neighbourhood with award-winning architecture, state-of-the-art community facilities and plenty of open spaces for you to enjoy.

Eddington also sets new benchmarks in sustainable living: these aspirations combine low-carbon homes and innovative site-wide infrastructure, helping people lead more sustainable lives.

What you see today is the first phase of the development. Future phases will include additional homes, as well as academic and research facilities.

**Eddington**  
Portal Estate Management Office  
25 Eddington Avenue, Cambridge, CB3 1SE  
[www.eddington-cambridge.co.uk](http://www.eddington-cambridge.co.uk)

If you have any questions about travelling to Eddington, please get in touch with the transport team at [portal@eddington-cambridge.co.uk](mailto:portal@eddington-cambridge.co.uk)

X @Eddington\_Camb  
@Eddington\_Camb

All information in this leaflet is correct at time of printing.  
January 2024

## Travel Map and Self Guided Tour

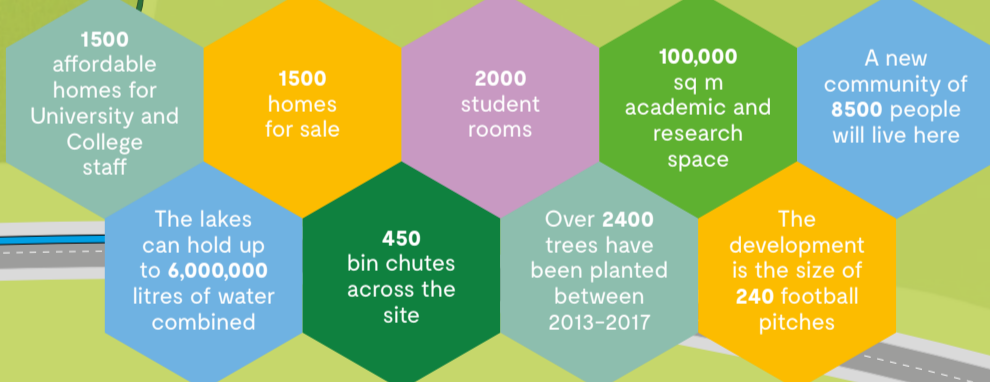


## Eddington cycling and walking network

Use the map to plan your cycling and walking routes to Girton, West Cambridge, the city and beyond. The Ridgeway provides a direct route across Eddington, connecting to a network of pedestrian and cycle paths to Huntingdon Road, Storey's Way and Maddingley Road.

## Join the Car Club!

Car club vehicles are parked on the Eddington site, giving you access to a car when you need it – perfectly maintained without the hassle or expense of ownership. Whether you're planning a family day out or want to explore beyond Cambridge, a car club car makes it that much easier.  
[www.eddington-cambridge.co.uk/cars-at-eddington](http://www.eddington-cambridge.co.uk/cars-at-eddington)



# EDDINGTON CAMBRIDGE

## 1 Eddington Square

The central heart of Eddington is its Eddington Square, which plays an important role in supporting everyday life for residents and neighbours. Sainsbury's, Argos, and Dulcedo Social are already established on the square, with Turing Locke Apartments, the Hyatt Hotel, Brew, The Astronomer Bar and Brasserie and Dutch cocktails all within walking distance. The square features paving stones quarried from Caithness in Scotland, specially designed lighting that animates the space in the evenings, and mature trees. **Landscaper Architect:** Townshend. **Architects:** Stanton Williams for the northern and western buildings, and WilkinsonEyre for the southern buildings

## 2 Storey's Field Centre

The community centre provides a natural meeting point for residents and the wider community and includes three multi-purpose rooms of varying sizes. The main performance hall has a sprung dance floor and acoustics to suit a range of events from cinema screenings, chamber music concerts and weddings. It has been designed to BREEAM Outstanding level and makes use of simple engineering and natural materials to achieve an elegant building. The Centre is connected to the Eddington Nursery and together the building was shortlisted for the 2018 RIBA Stirling Prize. In front of the Storey's Field Centre is a Public Artwork called Richard of York Gave Battle in Vain by David Batchelor and is inspired by Sir Isaac Newton's Colour Circle. **Architect:** McInnes Usher McKnight Architects (MUMA) **Artist:** David Batchelor

## 3 University of Cambridge Primary School

The primary school opened in September 2015 and was the first building in operation to support the new community. As a University Training School, it has three purposes: primary education for children; teacher training; and educational research. The circular form was conceived by the architects who explored educational best practices and precedents locally, nationally and internationally, to create a non-hierarchical space where every child matters. An inner courtyard contains an artwork called "We are all under the same sky" by Ruth Proctor and includes 67 photographs of the sky taken from places around the world. Each classroom has access to the outdoor space and is linked to others via a 'learning street'. The school grounds are complete with play areas, allotments and a woodland area to encourage forest school learning. **Architect:** Marks Barfield **Artist:** Ruth Proctor

## 4 University staff housing

Homes at Eddington are some of the most sustainable in the country. Built to industry standards, Code for Sustainable Homes–Level 5. This exceptionally high standard has been achieved through infrastructure all around Eddington and under the ground, but also through the design of the homes. The homes have insulated walls, double and triple glazing and photo-voltaics (solar panels) which contribute to the renewable energy strategy. Technology and design of the homes include passive solar design, natural ventilation and generous windows to allow natural daylight. These homes are rented at affordable levels to qualifying University and College staff. **Architects:** Wilkinson Eyre with Mole, Mecanoo, Witherford Watson Mann with Maccreeanor Lavington, Stanton Williams

## 5 Swirles Court

Cambridge is a collegiate university that offers its students an unrivalled all-round residential educational experience within beautifully designed and managed living and learning spaces. Swirles Court is a purpose-designed, environmentally sustainable, post-graduate complex forming part of Girton College. It is a fitting addition to Eddington's mixed academic and urban community. **Architect:** RH Partnership

## 6 Ridgeway

Our high-quality Greenway, the Ridgeway is the 900m dedicated cycle and pedestrian route which provides a direct route across the site, connecting also to the network of foot and cycle paths around Eddington. The name of the Ridgeway is a reference to the geological features of the site as it follows the natural plateau of the land and the historic ridge. To the north of the ridgeline was traditionally marked by soil that was more clay-like in substance, and to the south, the ground conditions were more gravel-like. There are also 12,000 cycle spaces planned for the site.

## 7 Energy centre

The highest point of Eddington is the chimney of the energy centre located in the middle of the development. Within the energy centre, is a gas-fired boiler that produces heating and hot water, which is provided to every household in Eddington through a district heating network. Together, the energy centre and district heating network produce efficiencies in energy production. Homes use heating and hot water from this network and do not have individual gas boilers.

## 8 Waste

Around Eddington are chutes that mark the underground waste and recycling system. The communal system is common in mainland Europe but infrequently seen in the UK and has been chosen to promote greater levels of recycling. Beneath the ground are receptacles that store rubbish and recycling which all have sensors that detect when they are at 80% capacity, which sends a signal to the bin lorry when it is ready for collection. This means that the units are only collected when they are near capacity, cutting the stop-start motion of the waste collection lorry on bin collection day and the carbon emissions related to those vehicle movements. It also means that the pavements are clear of wheeled bins since they aren't used at Eddington.

## 9 Brook Leys

Newly formed lakes have been created to meet the high sustainability aspirations of the development. East Anglia is classified as semi-arid in planning terms, but the flat landscape in Cambridge sees localised flood risk to downstream communities. The lakes on the development are the heart of a Sustainable Urban Drainage System across the site and form the base of the UK's largest rainwater recycling scheme. Rainwater from the development travels through swales and green corridors by gravity to the lagoons, where it is then held, treated and cleaned, before being pumped back into homes for non-potable water uses, such as toilet flushing and irrigation. The lakes also provide a recreational area with cycle and pedestrian paths. A two-part artwork called the Fata Morgana Tea House and Pixel Wall is also located on Brook Leys. **Landscaper Architect:** AECOM **Artists:** Winter and Hoerbelt