

Roof-Top Elements

Maximum Parameters



**Viewing Information**

This photograph and visualisation is a cylindrical projection panorama. Hold this sheet at a comfortable arm's length from your eyes and curve the image through 90° and turn head to view. Alternatively, the visualisation can be laid flat and viewed by scanning left or right parallel to the sheet maintaining a 50cm viewing distance between your eye and the page.

This visualisation is a tool for assessment and is best used for comparison in the field from the viewpoint location shown. It cannot be considered a substitute for visiting the viewpoint location.

**Technical Information**

The technical photography, accuracy of 3D modelling and generation of visualisation is an Accurate Visual Representation. This is explained and presented in the accompanying Technical Methodology.

**Printing Note**

This viewpoint visualisation is spread across a single sheet 841mm wide and 297mm high. To give the correct viewing distance the sheet should be printed at a scale of 1:1 on large format paper and cut to size. Do not print at A3



**North West Cambridge**  
Viewpoint 33

**Maximum Parameters 3D Model Composite View**



Roof-Top Elements

Maximum Parameters



**Viewing Information**

This photograph and visualisation is a cylindrical projection panorama. Hold this sheet at a comfortable arm's length from your eyes and curve the image through 90° and turn head to view. Alternatively, the visualisation can be laid flat and viewed by scanning left or right parallel to the sheet maintaining a 50cm viewing distance between your eye and the page.

This visualisation is a tool for assessment and is best used for comparison in the field from the viewpoint location shown. It cannot be considered a substitute for visiting the viewpoint location.

**Technical Information**

The technical photography, accuracy of 3D modelling and generation of visualisation is an Accurate Visual Representation. This is explained and presented in the accompanying Technical Methodology. **Printing Note**

This viewpoint visualisation is spread across a single sheet 841mm wide and 297mm high. To give the correct viewing distance the sheet should be printed at a scale of 1:1 on large format paper and cut to size. Do not print at A3



**North West Cambridge**  
**Viewpoint 33**  
**Maximum Parameters 3D Model Composite View**



**Viewing Information**

This photograph and visualisation is a cylindrical projection panorama. Hold this sheet at a comfortable arm's length from your eyes and curve the image through 90° and turn head to view. Alternatively, the visualisation can be laid flat and viewed by scanning left or right parallel to the sheet maintaining a 50cm viewing distance between your eye and the page.

This visualisation is a tool for assessment and is best used for comparison in the field from the viewpoint location shown. It cannot be considered a substitute for visiting the viewpoint location.

**Technical Information**

The technical photography, accuracy of 3D modelling and generation of visualisation is an Accurate Visual Representation. This is explained and presented in the accompanying Technical Methodology. **Printing Note**

This viewpoint visualisation is spread across a single sheet 841mm wide and 297mm high. To give the correct viewing distance the sheet should be printed at a scale of 1:1 on large format paper and cut to size. Do not print at A3



**North West Cambridge**  
Viewpoint 33

**Maximum Parameters Photomontage View (AVR1)**



Maximum Parameters



**Viewing Information**

This photograph and visualisation is a cylindrical projection panorama. Hold this sheet at a comfortable arm's length from your eyes and curve the image through 90° and turn head to view. Alternatively, the visualisation can be laid flat and viewed by scanning left or right parallel to the sheet maintaining a 50cm viewing distance between your eye and the page.

This visualisation is a tool for assessment and is best used for comparison in the field from the viewpoint location shown. It cannot be considered a substitute for visiting the viewpoint location.

**Technical Information**

The technical photography, accuracy of 3D modelling and generation of visualisation is an Accurate Visual Representation. This is explained and presented in the accompanying Technical Methodology.

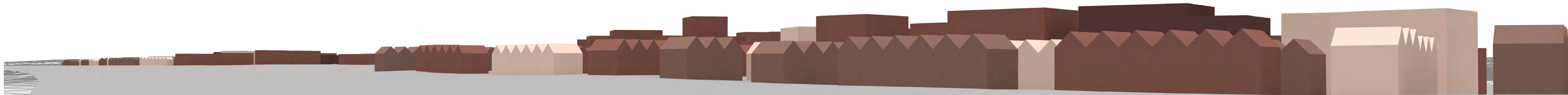
**Printing Note**

This viewpoint visualisation is spread across a single sheet 841mm wide and 297mm high. To give the correct viewing distance the sheet should be printed at a scale of 1:1 on large format paper and cut to size. Do not print at A3



**North West Cambridge**  
Viewpoint 33

**Maximum Parameters Photomontage View (AVR1)**



#### Viewing Information

This photograph and visualisation is a cylindrical projection panorama. Hold this sheet at a comfortable arm's length from your eyes and curve the image through 90° and turn head to view. Alternatively, the visualisation can be laid flat and viewed by scanning left or right parallel to the sheet maintaining a 50cm viewing distance between your eye and the page.

This visualisation is a tool for assessment and is best used for comparison in the field from the viewpoint location shown. It cannot be considered a substitute for visiting the viewpoint location.

#### Technical Information

The technical photography, accuracy of 3D modelling and generation of visualisation is an Accurate Visual Representation. This is explained and presented in the accompanying Technical Methodology.

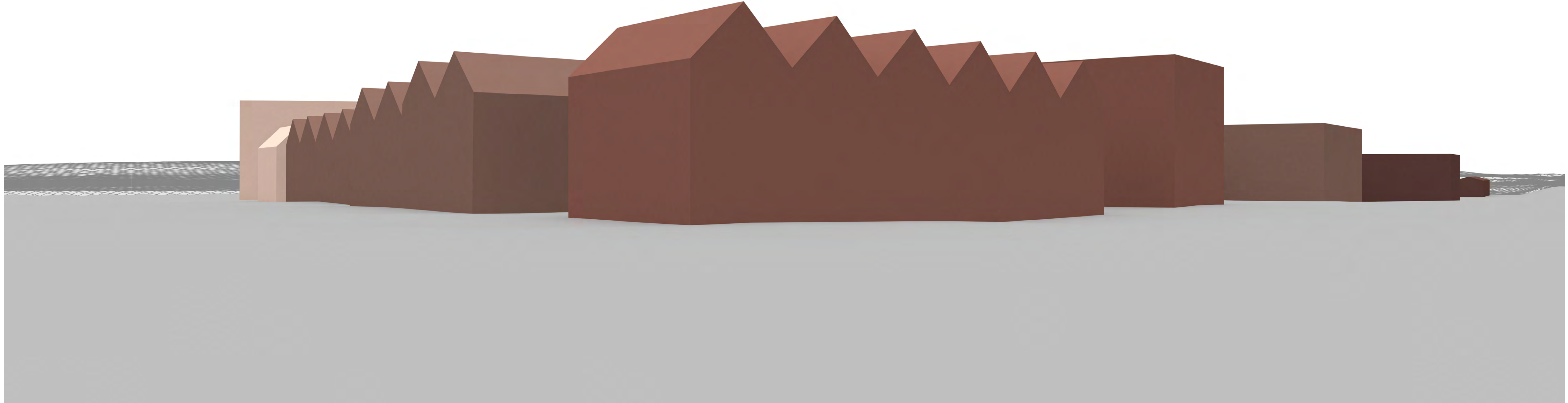
#### Printing Note

This viewpoint visualisation is spread across a single sheet 841mm wide and 297mm high. To give the correct viewing distance the sheet should be printed at a scale of 1:1 on large format paper and cut to size. Do not print at A3



## North West Cambridge

Viewpoint 33  
Illustrative Masterplan 3D Model View



**Viewing Information**

This photograph and visualisation is a cylindrical projection panorama. Hold this sheet at a comfortable arm's length from your eyes and curve the image through 90° and turn head to view. Alternatively, the visualisation can be laid flat and viewed by scanning left or right parallel to the sheet maintaining a 50cm viewing distance between your eye and the page.

This visualisation is a tool for assessment and is best used for comparison in the field from the viewpoint location shown. It cannot be considered a substitute for visiting the viewpoint location.

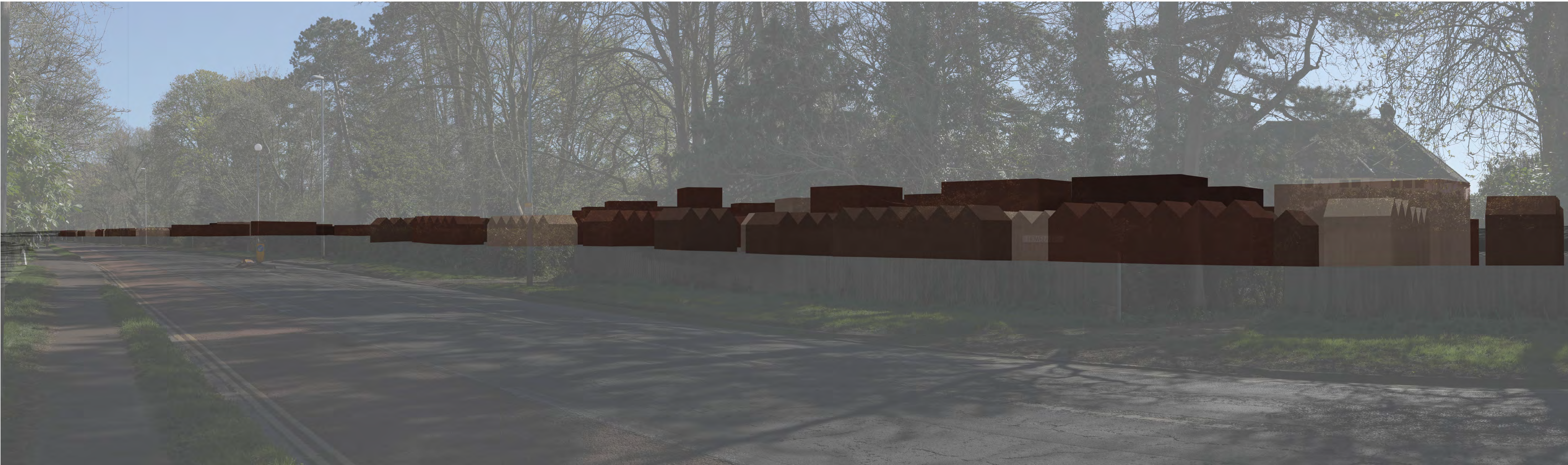
**Technical Information**

The technical photography, accuracy of 3D modelling and generation of visualisation is an Accurate Visual Representation. This is explained and presented in the accompanying Technical Methodology. **Printing Note**

This viewpoint visualisation is spread across a single sheet 841mm wide and 297mm high. To give the correct viewing distance the sheet should be printed at a scale of 1:1 on large format paper and cut to size. Do not print at A3



**North West Cambridge**  
Viewpoint 33  
Illustrative Masterplan 3D Model View



**Viewing Information**

This photograph and visualisation is a cylindrical projection panorama. Hold this sheet at a comfortable arm's length from your eyes and curve the image through 90° and turn head to view. Alternatively, the visualisation can be laid flat and viewed by scanning left or right parallel to the sheet maintaining a 50cm viewing distance between your eye and the page.

This visualisation is a tool for assessment and is best used for comparison in the field from the viewpoint location shown. It cannot be considered a substitute for visiting the viewpoint location.

**Technical Information**

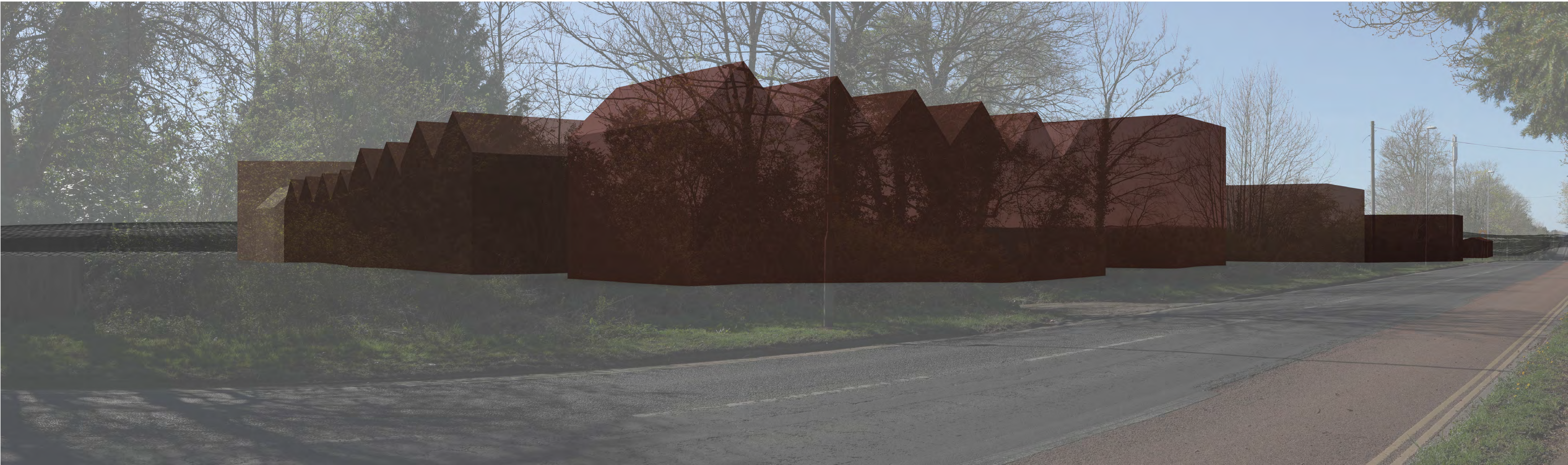
The technical photography, accuracy of 3D modelling and generation of visualisation is an Accurate Visual Representation. This is explained and presented in the accompanying Technical Methodology. **Printing Note**

This viewpoint visualisation is spread across a single sheet 841mm wide and 297mm high. To give the correct viewing distance the sheet should be printed at a scale of 1:1 on large format paper and cut to size. Do not print at A3



**North West Cambridge**  
Viewpoint 33

**Illustrative Masterplan 3D Model Composite View**



**Viewing Information**

This photograph and visualisation is a cylindrical projection panorama. Hold this sheet at a comfortable arm's length from your eyes and curve the image through 90° and turn head to view. Alternatively, the visualisation can be laid flat and viewed by scanning left or right parallel to the sheet maintaining a 50cm viewing distance between your eye and the page.

This visualisation is a tool for assessment and is best used for comparison in the field from the viewpoint location shown. It cannot be considered a substitute for visiting the viewpoint location.

**Technical Information**

The technical photography, accuracy of 3D modelling and generation of visualisation is an Accurate Visual Representation. This is explained and presented in the accompanying Technical Methodology.

**Printing Note**

This viewpoint visualisation is spread across a single sheet 841mm wide and 297mm high. To give the correct viewing distance the sheet should be printed at a scale of 1:1 on large format paper and cut to size. Do not print at A3



**North West Cambridge**  
Viewpoint 33

**Illustrative Masterplan 3D Model Composite View**



**Viewing Information**

This photograph and visualisation is a cylindrical projection panorama. Hold this sheet at a comfortable arm's length from your eyes and curve the image through 90° and turn head to view. Alternatively, the visualisation can be laid flat and viewed by scanning left or right parallel to the sheet maintaining a 50cm viewing distance between your eye and the page.

This visualisation is a tool for assessment and is best used for comparison in the field from the viewpoint location shown. It cannot be considered a substitute for visiting the viewpoint location.

**Technical Information**

The technical photography, accuracy of 3D modelling and generation of visualisation is an Accurate Visual Representation. This is explained and presented in the accompanying Technical Methodology. **Printing Note**

This viewpoint visualisation is spread across a single sheet 841mm wide and 297mm high. To give the correct viewing distance the sheet should be printed at a scale of 1:1 on large format paper and cut to size. Do not print at A3



**North West Cambridge**  
Viewpoint 33

**Illustrative Masterplan Photomontage View (AVR2)**



**Viewing Information**

This photograph and visualisation is a cylindrical projection panorama. Hold this sheet at a comfortable arm's length from your eyes and curve the image through 90° and turn head to view. Alternatively, the visualisation can be laid flat and viewed by scanning left or right parallel to the sheet maintaining a 50cm viewing distance between your eye and the page.

This visualisation is a tool for assessment and is best used for comparison in the field from the viewpoint location shown. It cannot be considered a substitute for visiting the viewpoint location.

**Technical Information**

The technical photography, accuracy of 3D modelling and generation of visualisation is an Accurate Visual Representation. This is explained and presented in the accompanying Technical Methodology.

**Printing Note**

This viewpoint visualisation is spread across a single sheet 841mm wide and 297mm high. To give the correct viewing distance the sheet should be printed at a scale of 1:1 on large format paper and cut to size. Do not print at A3



**North West Cambridge**  
Viewpoint 33

**Illustrative Masterplan Photomontage View (AVR2)**

Photography, 3D Model Images and Accurate Visual Representations (AVRs)

**North West Cambridge**

*Updated Viewpoints (Viewpoint 33a)*

March 2026

